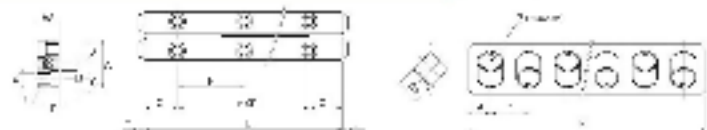


### Cross roller guideways VR1

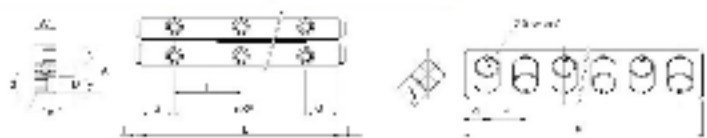


Dimension: H (mm)

Ser. No.	H (mm)	Roller dimensions											C <sub>10</sub> (mm)		Ball (mm)			
		d	d <sub>1</sub>	d <sub>2</sub>	d <sub>3</sub>	d <sub>4</sub>	d <sub>5</sub>	d <sub>6</sub>	d <sub>7</sub>	d <sub>8</sub>	d <sub>9</sub>	d <sub>10</sub>	d <sub>11</sub>	d <sub>12</sub>	d <sub>13</sub>	d <sub>14</sub>	d <sub>15</sub>	
VR1-20-50	20	20	14.12														2	
VR1-25-50	25	25	14.12														2	
VR1-30-50	30	30	14.12														2	
VR1-35-50	35	35	14.12														2	
VR1-40-50	40	40	14.12														2	
VR1-45-50	45	45	14.12														2	
VR1-50-50	50	50	14.12														2	
VR1-55-50	55	55	14.12														2	
VR1-60-50	60	60	14.12														2	
VR1-65-50	65	65	14.12														2	
VR1-70-50	70	70	14.12														2	
VR1-75-50	75	75	14.12														2	
VR1-80-50	80	80	14.12														2	
VR1-85-50	85	85	14.12														2	
VR1-90-50	90	90	14.12														2	
VR1-95-50	95	95	14.12														2	
VR1-100-50	100	100	14.12														2	

① Roller diameter (mm) ② Roller width (mm)

### Cross roller guideways VR2



Dimension: H (mm)

Ser. No.	H (mm)	Roller dimensions											C <sub>10</sub> (mm)		Ball (mm)			
		d	d <sub>1</sub>	d <sub>2</sub>	d <sub>3</sub>	d <sub>4</sub>	d <sub>5</sub>	d <sub>6</sub>	d <sub>7</sub>	d <sub>8</sub>	d <sub>9</sub>	d <sub>10</sub>	d <sub>11</sub>	d <sub>12</sub>	d <sub>13</sub>	d <sub>14</sub>	d <sub>15</sub>	
VR2-20-50	20	20	14.18														2	
VR2-25-50	25	25	14.18														2	
VR2-30-50	30	30	14.18														2	
VR2-35-50	35	35	14.18														2	
VR2-40-50	40	40	14.18														2	
VR2-45-50	45	45	14.18														2	
VR2-50-50	50	50	14.18														2	
VR2-55-50	55	55	14.18														2	
VR2-60-50	60	60	14.18														2	
VR2-65-50	65	65	14.18														2	
VR2-70-50	70	70	14.18														2	
VR2-75-50	75	75	14.18														2	
VR2-80-50	80	80	14.18														2	
VR2-85-50	85	85	14.18														2	
VR2-90-50	90	90	14.18														2	
VR2-95-50	95	95	14.18														2	
VR2-100-50	100	100	14.18														2	

① Roller diameter (mm) ② Roller width (mm)

### Cross roller guideways VR3

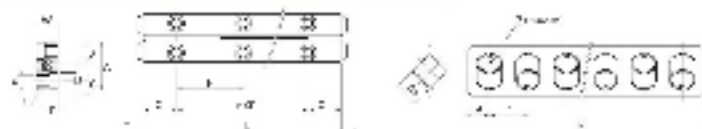


Dimension: H (mm)

Ser. No.	H (mm)	Roller dimensions											C <sub>10</sub> (mm)		Ball (mm)			
		d	d <sub>1</sub>	d <sub>2</sub>	d <sub>3</sub>	d <sub>4</sub>	d <sub>5</sub>	d <sub>6</sub>	d <sub>7</sub>	d <sub>8</sub>	d <sub>9</sub>	d <sub>10</sub>	d <sub>11</sub>	d <sub>12</sub>	d <sub>13</sub>	d <sub>14</sub>	d <sub>15</sub>	
VR3-20-50	20	20	14.25														2	
VR3-25-50	25	25	14.25														2	
VR3-30-50	30	30	14.25														2	
VR3-35-50	35	35	14.25														2	
VR3-40-50	40	40	14.25														2	
VR3-45-50	45	45	14.25														2	
VR3-50-50	50	50	14.25														2	
VR3-55-50	55	55	14.25														2	
VR3-60-50	60	60	14.25														2	
VR3-65-50	65	65	14.25														2	
VR3-70-50	70	70	14.25														2	
VR3-75-50	75	75	14.25														2	
VR3-80-50	80	80	14.25														2	
VR3-85-50	85	85	14.25														2	
VR3-90-50	90	90	14.25														2	
VR3-95-50	95	95	14.25														2	
VR3-100-50	100	100	14.25														2	

① Roller diameter (mm) ② Roller width (mm)

## Cross roller guideways VR4



Dimensions (in mm)

Model No.	No. of rollers	Roller size		Guideway dimensions													Max. load												
		A	B	C	D	E	F	G	H	I	J	K	L	M	N	O		P	Q	R	S	T	U	V	W	X	Y	Z	
VR4-20-72	18	20	72	30	1.6x3																								2
VR4-25-112	27	25	112	30	1.6x3																								3
VR4-30-152	36	30	152	30	1.6x3																								4
VR4-35-192	45	35	192	30	1.6x3																								5
VR4-40-232	54	40	232	30	1.6x3																								6
VR4-45-272	63	45	272	30	1.6x3	20	10.2	6.5	86	4.3	0	6.5	2.5	4	121	4.5	7	21	17.5	3.17	6.317								7
VR4-50-312	72	50	312	30	1.6x3																								8
VR4-55-352	81	55	352	30	1.6x3																								9
VR4-60-392	90	60	392	30	1.6x3																								10
VR4-65-432	99	65	432	30	1.6x3																								11

CI End cyclic bearing    CO End with fixed stop

## Cross roller guideways VR6



Dimensions (in mm)

Model No.	No. of rollers	Roller size		Guideway dimensions													Max. load												
		A	B	C	D	E	F	G	H	I	J	K	L	M	N	O		P	Q	R	S	T	U	V	W	X	Y	Z	
VR6-100-24	18	100	24	30	1.6x3																								2
VR6-120-32	24	120	32	30	1.6x3																								3
VR6-150-42	30	150	42	30	1.6x3																								4
VR6-200-62	42	200	62	30	1.6x3																								6
VR6-250-82	54	250	82	30	1.6x3																								8
VR6-300-102	66	300	102	30	1.6x3	20	10.2	6.5	86	4.3	0	6.5	2.5	4	121	4.5	7	21	17.5	3.17	6.317								10
VR6-350-122	78	350	122	30	1.6x3																								12
VR6-400-142	90	400	142	30	1.6x3																								14
VR6-450-162	102	450	162	30	1.6x3																								16
VR6-500-182	114	500	182	30	1.6x3																								18
VR6-550-202	126	550	202	30	1.6x3																								20
VR6-600-222	138	600	222	30	1.6x3																								22
VR6-650-242	150	650	242	30	1.6x3																								24
VR6-700-262	162	700	262	30	1.6x3																								26
VR6-750-282	174	750	282	30	1.6x3																								28
VR6-800-302	186	800	302	30	1.6x3																								30
VR6-850-322	198	850	322	30	1.6x3																								32
VR6-900-342	210	900	342	30	1.6x3																								34
VR6-950-362	222	950	362	30	1.6x3																								36
VR6-1000-382	234	1000	382	30	1.6x3																								38

CI End cyclic bearing    CO End with fixed stop

## Cross roller guideways VR8



Dimensions (in mm)

Model No.	No. of rollers	Roller size		Guideway dimensions													Max. load												
		A	B	C	D	E	F	G	H	I	J	K	L	M	N	O		P	Q	R	S	T	U	V	W	X	Y	Z	
VR8-200-62	18	200	62	30	1.6x3																								2
VR8-250-82	24	250	82	30	1.6x3																								3
VR8-300-102	30	300	102	30	1.6x3																								4
VR8-350-122	36	350	122	30	1.6x3																								6
VR8-400-142	42	400	142	30	1.6x3																								8
VR8-450-162	48	450	162	30	1.6x3																								10
VR8-500-182	54	500	182	30	1.6x3																								12
VR8-550-202	60	550	202	30	1.6x3																								14
VR8-600-222	66	600	222	30	1.6x3																								16
VR8-650-242	72	650	242	30	1.6x3																								18
VR8-700-262	78	700	262	30	1.6x3																								20
VR8-750-282	84	750	282	30	1.6x3																								22
VR8-800-302	90	800	302	30	1.6x3																								24
VR8-850-322	96	850	322	30	1.6x3																								26
VR8-900-342	102	900	342	30	1.6x3																								28
VR8-950-362	108	950	362	30	1.6x3																								30
VR8-1000-382	114	1000	382	30	1.6x3																								32

CI End cyclic bearing    CO End with fixed stop

## Cross roller guideways VR12



Divisions: 10 (mm)

Max. speed	Max. load	Max. divisions											Div. load					
		2	3	4	5	6	7	8	9	10	11	12	g	t	C <sub>0</sub>			
VR12-200-07	170			670	7 × 150								120			1		
VR12-200-07	100			570	7 × 150								90			0		
VR12-200-07	200			470	7 × 150								60					
VR12-200-07	300			370	7 × 150								30					
VR12-200-07	300			270	7 × 150								10					
VR12-200-12	160		28	500	8 × 150	40	28	18	12	8	8	12	50	10	30	30	0.8	0.8
VR12-200-12	100			400	8 × 150								50			20		
VR12-200-12	200			300	8 × 150								40			10		
VR12-200-12	300			200	8 × 150								30			5		
VR12-200-12	300			100	8 × 150								20			5		
VR12-200-12	400			100	8 × 150								10			5		
VR12-200-12	400			50	8 × 150								10			5		
VR12-200-12	400			50	8 × 150								10			5		
VR12-200-12	400			50	8 × 150								10			5		
VR12-200-12	400			50	8 × 150								10			5		
VR12-200-12	400			50	8 × 150								10			5		
VR12-200-12	400			50	8 × 150								10			5		
VR12-200-12	400			50	8 × 150								10			5		

CG: Anti-gravitation bearing CCL: Endless lead bearing

## Cross roller guideways VR15



Divisions: 10 (mm)

Max. speed	Max. load	Max. divisions											Div. load					
		2	3	4	5	6	7	8	9	10	11	12	g	t	C <sub>0</sub>			
VR15-300-07	100			400	7 × 200								90			6		
VR15-300-07	200			300	7 × 200								60			11		
VR15-300-07	300			200	7 × 200								30			10		
VR15-300-07	300			100	7 × 200								15			11		
VR15-300-07	300			50	7 × 200								10			10		
VR15-300-12	160		28	400	8 × 200	40	28	18	12	8	8	12	50	10	30	10	0.8	0.8
VR15-300-12	100			300	8 × 200								50			20		
VR15-300-12	200			200	8 × 200								40			10		
VR15-300-12	300			100	8 × 200								30			5		
VR15-300-12	300			100	8 × 200								30			5		
VR15-300-12	300			50	8 × 200								20			5		
VR15-300-12	300			50	8 × 200								20			5		
VR15-300-12	300			50	8 × 200								20			5		
VR15-300-12	300			50	8 × 200								20			5		
VR15-300-12	300			50	8 × 200								20			5		
VR15-300-12	300			50	8 × 200								20			5		
VR15-300-12	300			50	8 × 200								20			5		
VR15-300-12	300			50	8 × 200								20			5		
VR15-300-12	300			50	8 × 200								20			5		

CG: Anti-gravitation bearing CCL: Endless lead bearing

## Cross roller guideways VR18



Divisions: 10 (mm)

Max. speed	Max. load	Max. divisions											Div. load					
		2	3	4	5	6	7	8	9	10	11	12	g	t	C <sub>0</sub>			
VR18-400-07	170			400	7 × 250								100			6		
VR18-400-07	200			300	7 × 250								70			6		
VR18-400-07	300			200	7 × 250								40			7		
VR18-400-07	300			100	7 × 250								20			7		
VR18-400-12	160		28	400	8 × 250	40	28	18	12	8	8	12	50	10	30	10	0.8	0.8
VR18-400-12	100			300	8 × 250								50			20		
VR18-400-12	200			200	8 × 250								40			10		
VR18-400-12	300			100	8 × 250								30			5		
VR18-400-12	300			100	8 × 250								30			5		
VR18-400-12	300			50	8 × 250								20			5		
VR18-400-12	300			50	8 × 250								20			5		
VR18-400-12	300			50	8 × 250								20			5		
VR18-400-12	300			50	8 × 250								20			5		
VR18-400-12	300			50	8 × 250								20			5		
VR18-400-12	300			50	8 × 250								20			5		
VR18-400-12	300			50	8 × 250								20			5		
VR18-400-12	300			50	8 × 250								20			5		
VR18-400-12	300			50	8 × 250								20			5		
VR18-400-12	300			50	8 × 250								20			5		
VR18-400-12	300			50	8 × 250								20			5		

CG: Anti-gravitation bearing CCL: Endless lead bearing