

Feature

- Max.load 7000N
- Product class IP65
- Compact mechanical system
- Built-in clutch
- Imported HALL sensors (options)
- CE certificated
- Widely work in the harsh environment

Model ALM606A



Basic Spec.

Housing color	<input type="checkbox"/> Black	<input type="checkbox"/> Customize colors					
Screw type	<input type="checkbox"/> T-screw	<input type="checkbox"/> Ball screw					
Control	<input type="checkbox"/> control box	<input type="checkbox"/> control system + manual					
Application	<input type="checkbox"/> Industrial						
Work environment	<input type="checkbox"/> 0~40°C	<input type="checkbox"/> -20~65°C				<input type="checkbox"/> -40~65°C	
Noise level	<input type="checkbox"/> ≤75dB						
Stroke	<input type="checkbox"/> 50-600mm	<input type="checkbox"/> Customize stroke					
Load	<input type="checkbox"/> ≤1200N	<input type="checkbox"/> ≤2000N				<input type="checkbox"/> ≤2500N	<input type="checkbox"/> ≤7000N
Duty cycle	<input type="checkbox"/> 10%	<input type="checkbox"/> 20%					
Motor type	<input type="checkbox"/> Brushed DC motor						
Over-load production	<input type="checkbox"/> No	<input type="checkbox"/> Clutch					
IP rating	<input type="checkbox"/> No	<input type="checkbox"/> IP65					
Signal output	<input type="checkbox"/> No	<input type="checkbox"/> Hall sensors	<input type="checkbox"/> Magnetic switch				
Input voltage	<input type="checkbox"/> 12V	<input type="checkbox"/> 24V	<input type="checkbox"/> 36V	<input type="checkbox"/> 48V	<input type="checkbox"/> 72V		
Cable length	<input type="checkbox"/> 1m	<input type="checkbox"/> 2m	<input type="checkbox"/> Customize length				

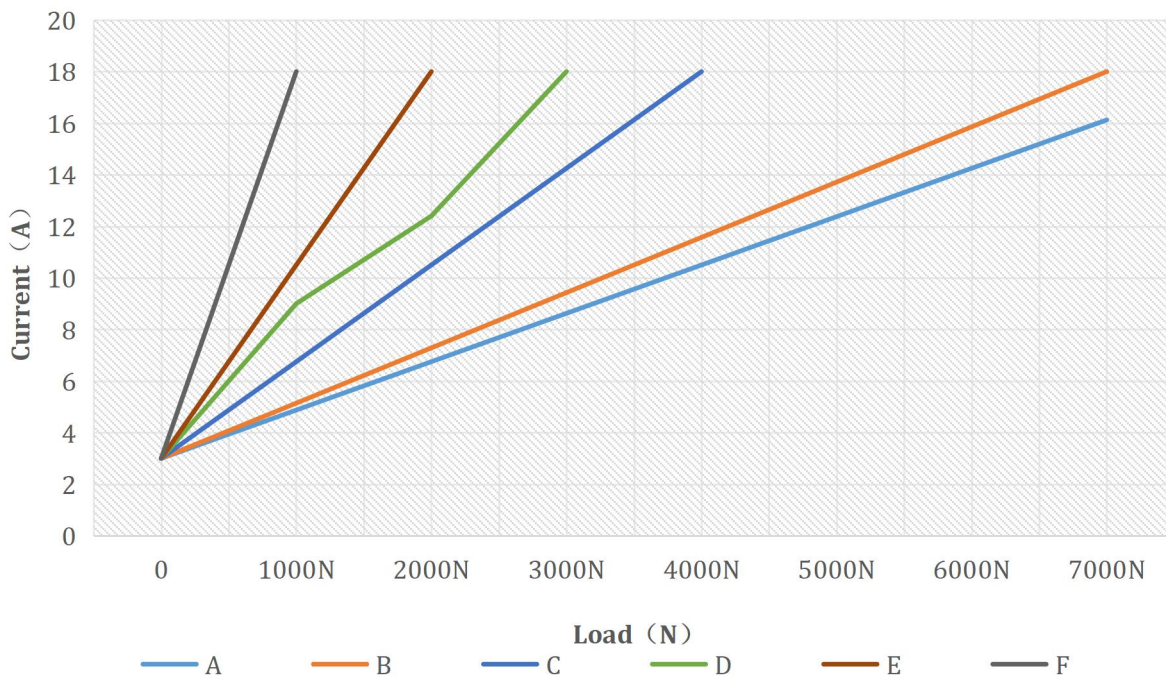
Load & Speed & Current

Code	Gear ratio	Screw pitch	No-load speed (mm/s)	Full-load speed (mm/s) ±5%	Max.load (N)	No-load current (A)				Full-load current (A)			
						12V	24V	36V	48V	12V	24V	36V	48V
A	40:1	3	5	4	7000	2.5	1.2	0.8	0.6	18	9	6	4
B		5	8.5	7	6000	2.5	1.2	0.8	0.6	18	9	6	4
C	20:1	5	17	13	3000	3	1.5	1.0	0.8	17	9	6	4
D		7.5	24	17	2000	3	1.5	1.0	0.8	17	9	6	4
E	10:1	5	35	26	1600	3	1.5	1.0	0.8	17	8	6	4
F		7.5	50	36	1000	3	1.5	1.0	0.8	17	8	6	4

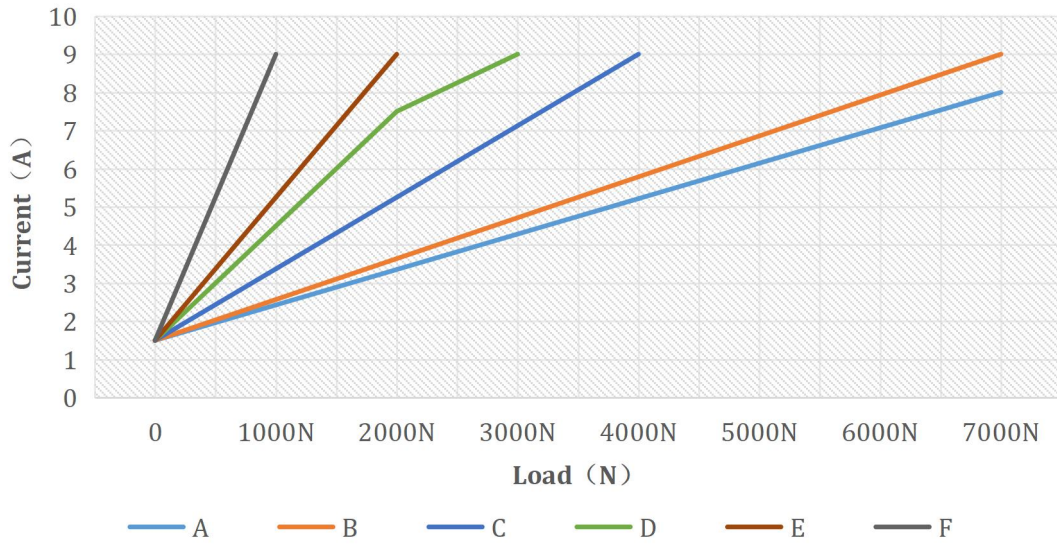
Load & Current

(The letter corresponds to the transmission code in the selection parameter table)

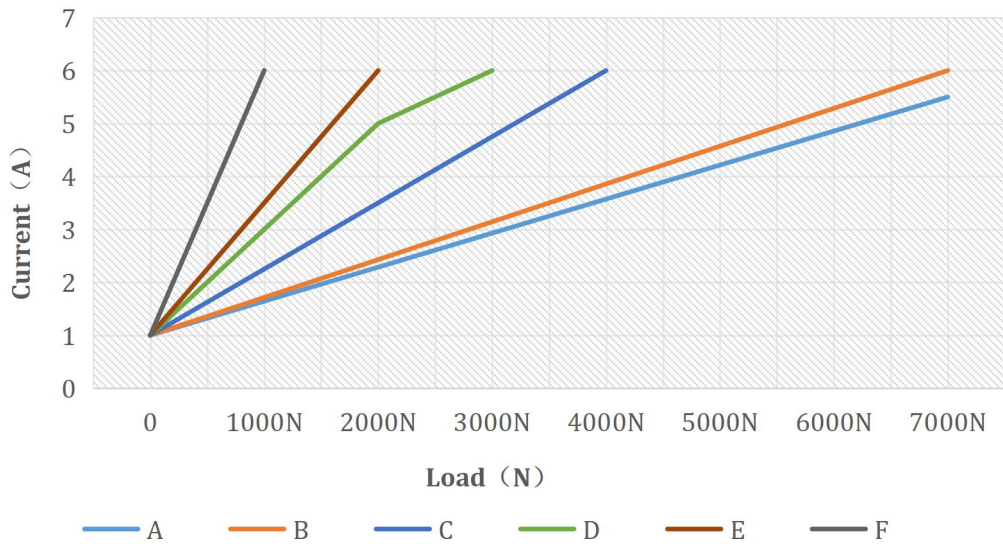
12V Load & Current



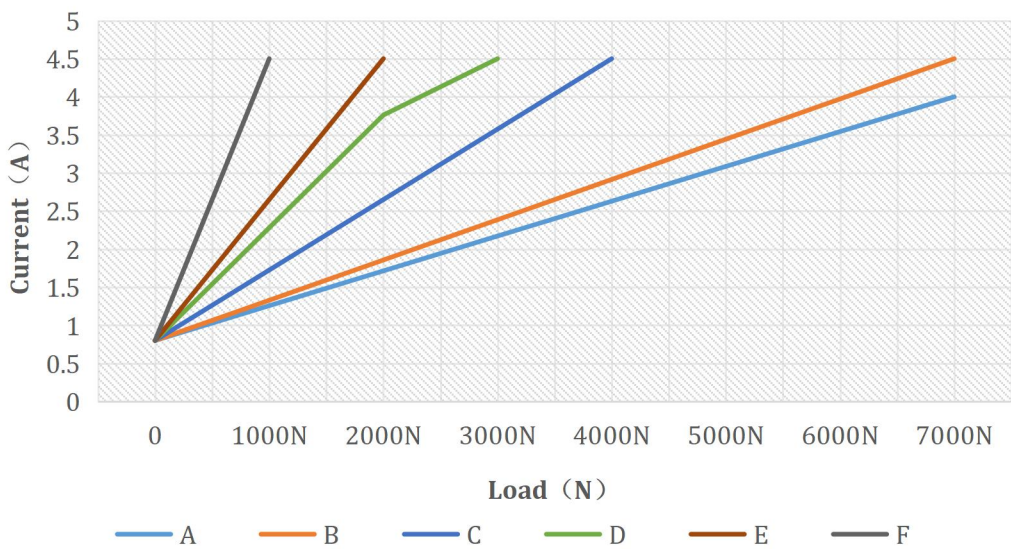
24V Load & Current



36V Load & Current



48V Load & Current

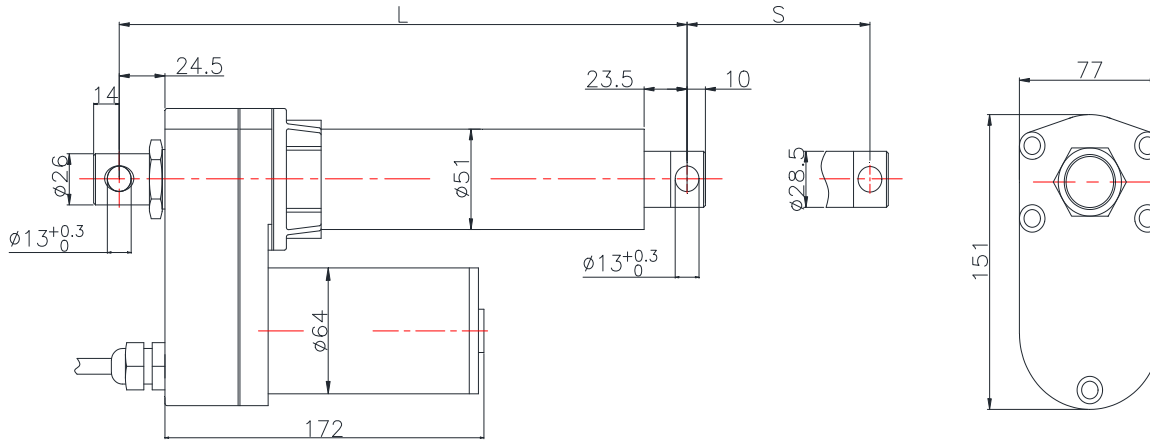


Mounting length

Dimension

S: Stroke, the travel length of actuator

L: Length, the fully retracted length of actuator from front hole centre to rear hole centre



Stroke & Length

Linear actuator without limit switches

S(mm)	Retracted L(mm)	Extended A(mm)	Simulate
50	250	300	$50 \leq \text{Stroke} \leq 300,$ $L = S + 200$ $A = L + S (A = S * 2 + 200)$
100	300	400	
150	350	500	
200	400	600	
250	450	700	
300	500	800	
350	600	950	$300 < \text{Stroke} \leq 600,$ $L = S + 250$ $A = L + S (A = S * 2 + 250)$
400	650	1050	
450	700	1150	
500	750	1250	
550	800	1350	
600	850	1450	
650	950	1600	$600 < \text{Stroke} \leq 900,$ $L = S + 300$ $A = L + S (A = S * 2 + 300)$
700	1000	1700	
750	1050	1800	
800	1100	1900	
850	1150	2000	
900	1200	2100	

Signal feedback

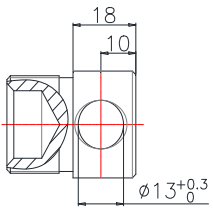
Hall sensor signal

Hall sensors built-in motor				
Code	Signal feedback	Magnetic pole	resolution (1 pair of pole) Pulse/mm	Resolution (4 pairs of poles) Pulse/mm
A	Hall sensors	1 pair of pole or 4 pairs of poles	13.78pulse/mm	55.11pulse/mm
B			8.265pulse/mm	33.06pulse/mm
C			4pulse/mm	16pulse/mm
D			2.67pulse/mm	10.67pulse/mm
E			1.94pulse/mm	7.75pulse/mm
F			1.29pulse/mm	5.17pulse/mm
Phase difference				
Phase difference 90°		<p>The diagram illustrates the 90-degree phase difference between Hall 1 and Hall 2 signals. It shows two square wave signals, Hall 1 (霍尔1) and Hall 2 (霍尔2), for two different states: 'Extend 伸长' and 'Retract 缩短'. In the 'Extend' state, Hall 1 is high and Hall 2 is low. In the 'Retract' state, Hall 1 is low and Hall 2 is high. Blue arrows above each signal indicate the pulse width, which is consistent for both sensors in each state.</p>		

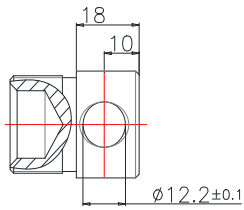
Notice: Hall sensor power supply 3.3V-24V, recommend to use 5V or 12V

Attachment options

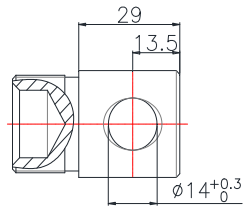
Front



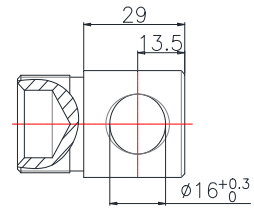
01



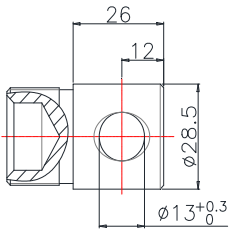
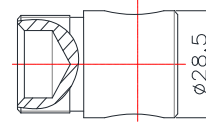
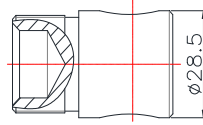
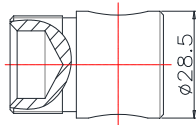
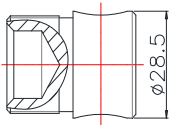
02



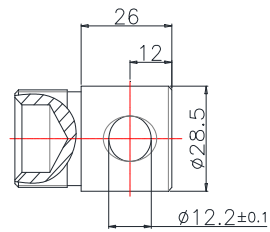
03



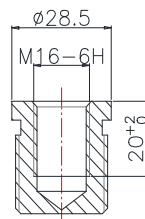
04



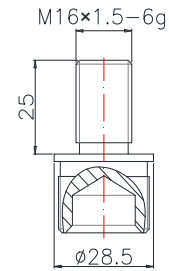
05



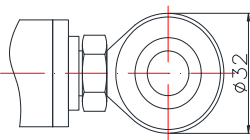
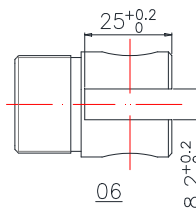
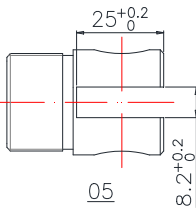
06



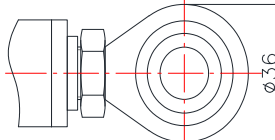
07



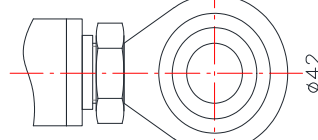
08



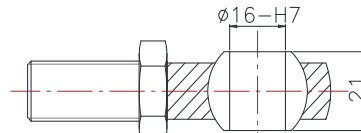
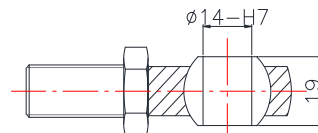
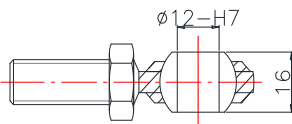
09



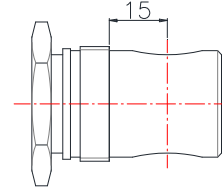
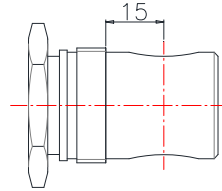
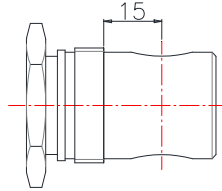
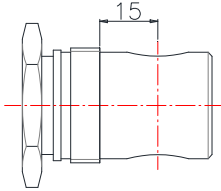
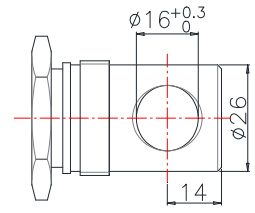
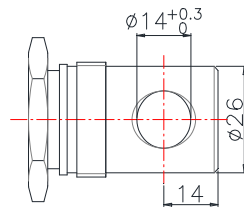
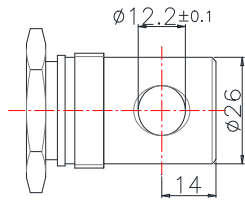
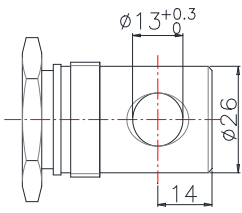
10



11



Rear

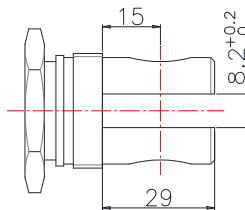
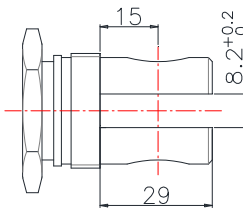
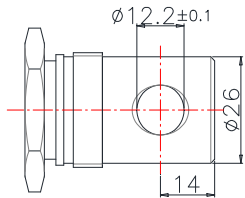
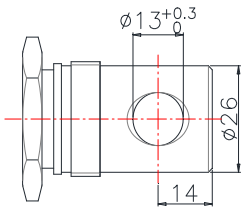


01

02

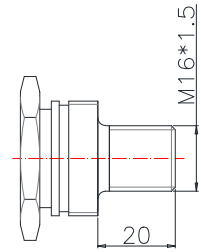
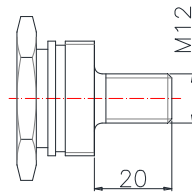
03

04



05

06



07

08

Main products

Model	Load (N)	Stroke (mm)	Speed (mm/s)	IP rating	Application
YMD501B	8000	50-600mm	5-17mm/s	IP65	Medical,furniture, industrial
YMD601	1200	50-600mm	3.5-80mm/s	IP65	Industrial
YMD602	2000	50-600mm	3.5-55mm/s	IP65	Industrial
YMD603	2500	50-600mm	5-15mm/s	IP65	Medical,furniture, industrial
YMD606	8000	50-900mm	5-50mm/s	IP65	Industrial
YMD606A	7000	50-600mm	5-50mm/s	IP65	Industrial
YMD607	4000	50-600mm	5-50mm/s	IP65	Industrial
YMD608	12000	50-1000mm	6.5-38mm/s	IP66	Industrial